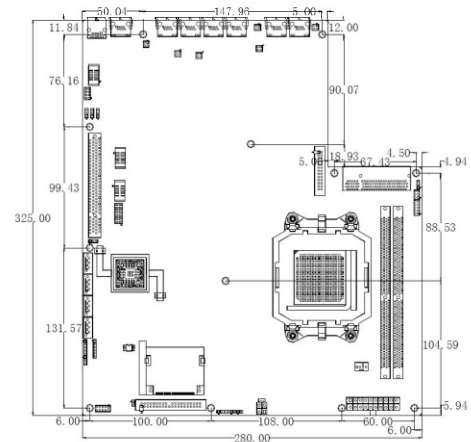
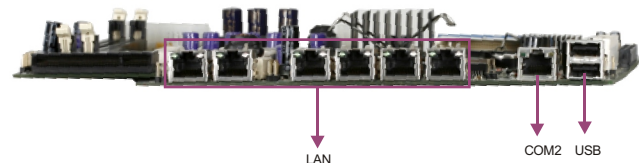
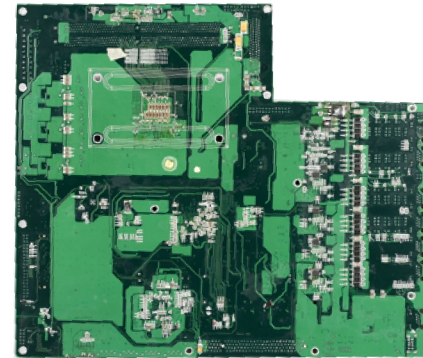
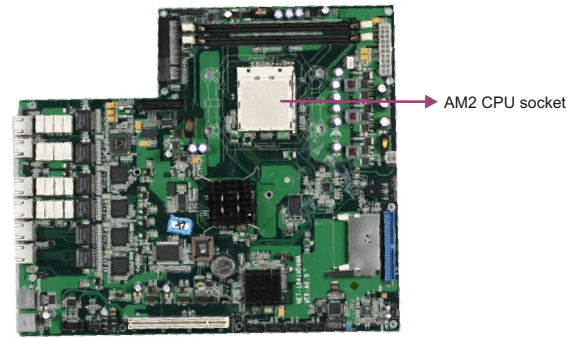


# NET-1841VD6NA

Network Application SBC with CPU/Memory /VGA/CF/6LAN/Audio



## Features

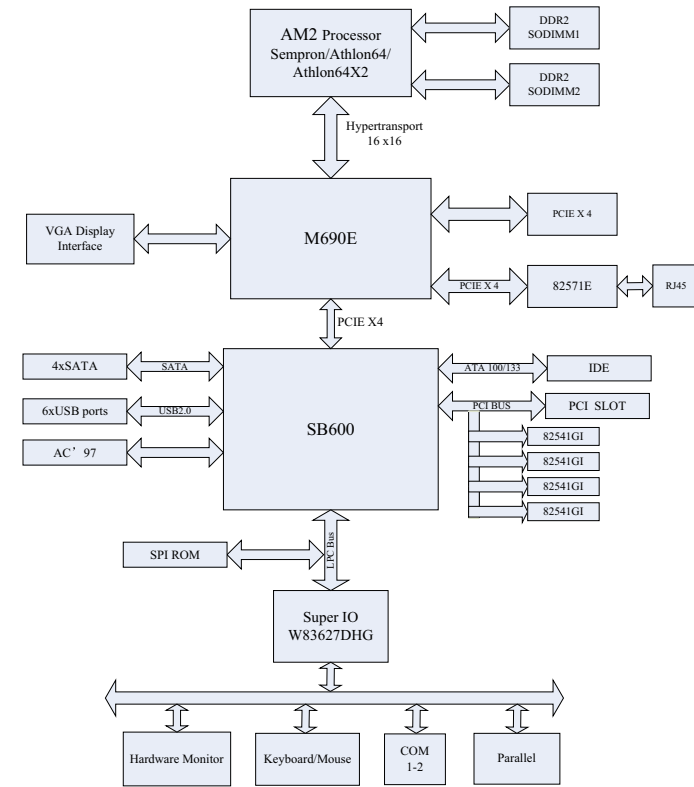
- AMD AM2 Sempron™/Athlon™64/Athlon™ 64 x 2 CPU
- Supports 2 x 240-pin DDR2, up to 4GB memory
- Supports 6 x 10/100/1000Mbps Ethernet interface
- Supports 6 x USB2.0, 1 x LPT, 2 x COM
- Supports 1 x PCI, 1 x PCI-E x4

## Specifications

System	
Processor	AMD AM2 Sempron™/Athlon™64/Athlon™ 64 x 2 CPU
Chipset	M690E+SB600
Memory	Supports 2 x 240-pin DDR2, up to 4GB memory
Hardware Monitor	CPU temperature, fan speed and voltage monitor
Watchdog Timer	1-255 seconds or 1-255 minutes
Expansion Interface	1 x PCI, 1 x PCI-E x4
Storage	
IDE	1 x Ultra ATA 33/66/100 IDE
Serial ATA	4 x SATAII, supporting RAID0, 1, 1+0
Floppy	N/A
CF	1 x CF Socket TYPE I/II
DOC/DOM	N/A
I/O Interface	
USB	6 x USB2.0 Ports
Serial Port	2 x RS-232(COM2 with RJ45 port)
Parallel Port	1 x LPT
Bypass	1 x Bypass control port
GPIO	4-bit digital I/O interface
Audio	AC'97
Keyboard/Mouse	1 x PS/2

Display	
Chipset	M690E integrated Radeon X1250
Memory	64MB
Resolution	VGA mode up to 2048 x 1536@75Hz
Dual Display	N/A
Ethernet	
Chipset	Intel® 82541GI, Intel® 82571EB (LAN1 supports WOL, LAN3-6 support Bypass)
Speed	10/100/1000Mbps
Connector	6 x RJ45
Mechanical and Environmental	
Dimensions	325mm x 280mm
Operating Temperature	0 C-60 C
Storage Temperature	N/A
Operating Humidity	5%-90%, non-condensing
Power	
Power Supply	Supports ATX power supply
Power Consumption	N/A
Operating System	
Windows OS	Windows 2000/ Windows XP
Embedded OS	Linux

## Board Diagram



## Available Accessories

Part Number	Name	Description	Qty.
	Driver CD/Protective film/RoHS	NET-1841VD6NA	1
2330-000041	Jumper/RoHS	2.54mm pitch, blue	3
2340-002260	Heat sink combination/CoolerMast	Heat sink (copper)+ fan S2K-6FMCS-06-GP	1
2340-002270	Heat sink backplane CoolerMast	Steel backplane + insulating trip EBP-KAM2-GP	1
2360-000591	Audio cable/RoHS	Three audio jacks to one 10 Pin (2x5) connector (2.54mm pitch), length: 550mm/RoHS	1
2360-000671	VGA cable/RoHS	2x8 Pin female connector, 2.0mm pitch to DB15P connector/length: 300mm	1
2360-000831	Y-cable for keyboard and mouse/RoHS	2x4 Pin to PS/2 port connector, length: 300mm/RoHS	1
2360-005051	Parallel port cable/RoHS	Parallel port cable, DB25 connector to 26 Pin, length: 300mm/RoHS	1
2360-008331	HDD flat cable/RoHS	DMA66/HDD/CABLE/40P/80-line/length: 450mm	1
2360-011231	Serial port cable/RoHS	DB9 connector to 10 Pin (2x5) connector (2.0mm pitch), length: 300mm/RoHS	1
2360-014781	Dual USB ports with bracket/RoHS	Two USB ports to one 10 Pin (2x5) connector (2.0mm pitch), length: 550mm/RoHS	1
2360-017961	SATAHDD cable/RoHS	SATA7 Pin to SATA7 Pin with elbow connector, length: 550mm/RoHS	1
	Setup Guide/RoHS	AMI/BIOS Setup Guide (for Core/8)	1
	User Manual/RoHS	NET-1841VD6NA	1

## Ordering Information

Part Number	Model Number	Description
0030-002980	NET-1841VD6NA	Motherboard