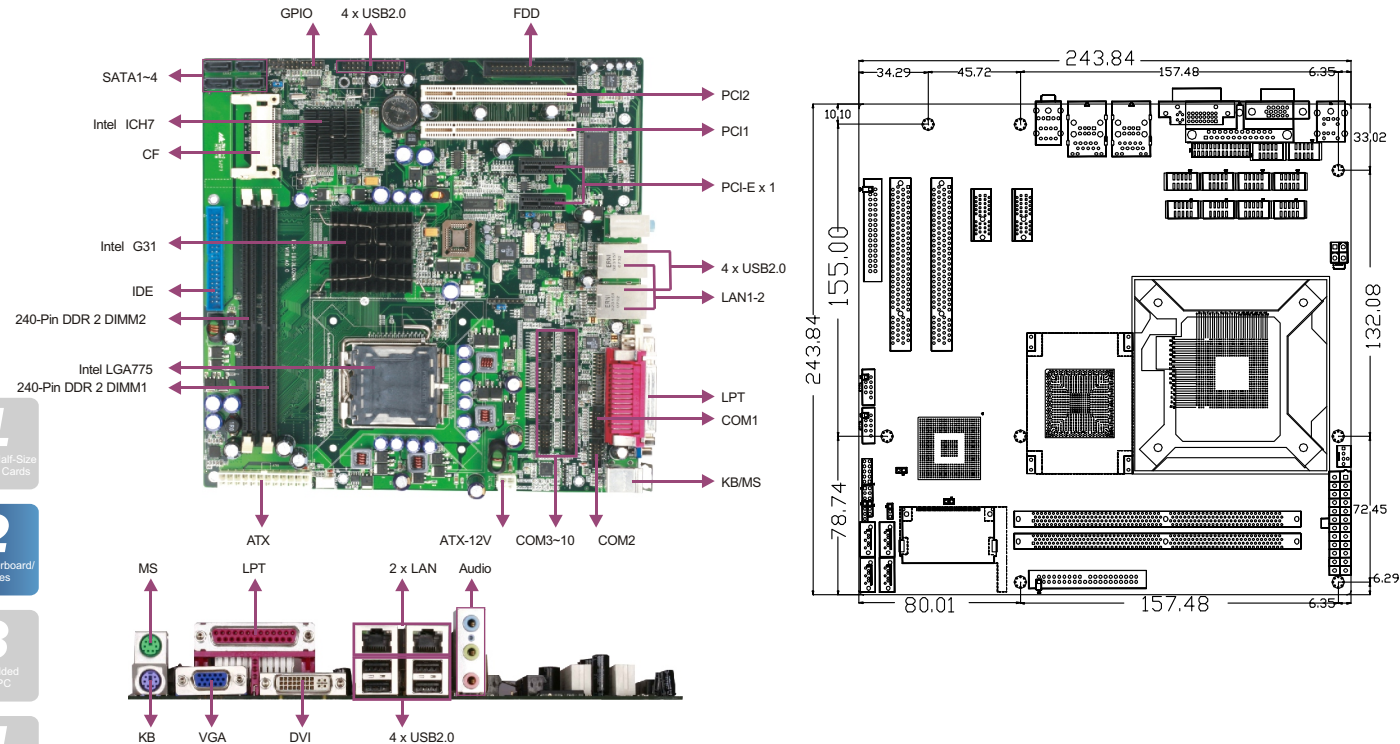


EC9-1813VD2NA

Embedded ATX SBC with VGA/DVI/SSD/2LAN/Audio



Features

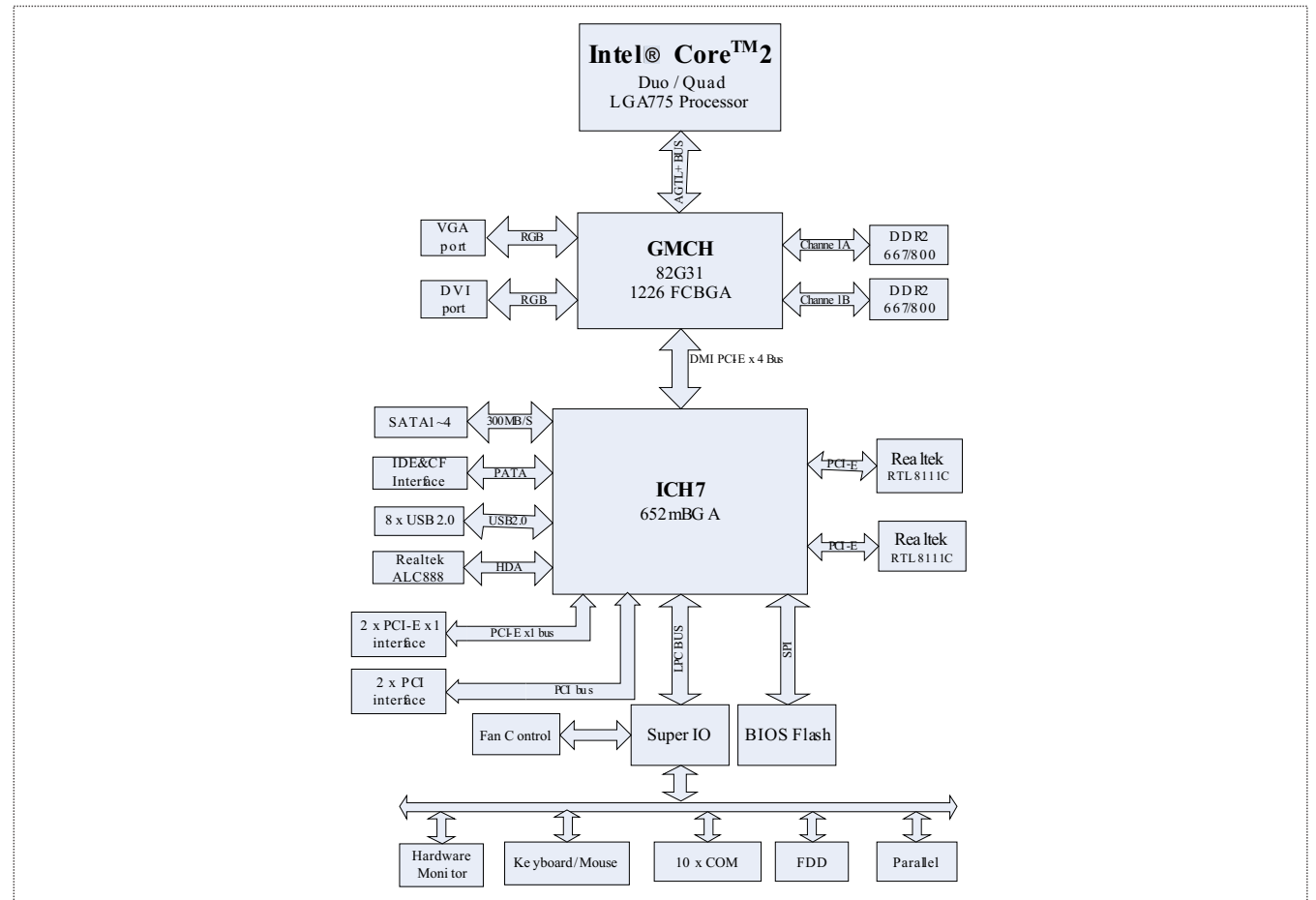
- Supports Intel® LGA775 Core™2 Duo / Quad Processor
- Supports 2 x 240-pin DIMM, dual-channel DDR2 533/667/800, memory up to 4GB
- Supports 2 x Gbit10/100/1000M Ethernet interface
- Intel® G31 chipset integrates graphics processing core, supporting multiple output of VGA, DVI-I
- Supports 8 x USB2.0, 10 x COM, 4 x SATA, 1 x IDE, 1 x CF, 1 x FDD, 1 x LPT, 1 x KB/MS

Specifications

System	
Processor	Supports Intel® Core™2 Duo / Quad LGA775 Processor, with 800/1066MHz FSB
Chipset	Intel® G31 +ICH7
Memory	2 x DDR2 memory slot, supporting dual-channel DDR2 667/800 memory, up to 4GB
Hardware Monitor	Monitors CPU temperature, voltage and watchdog timer, etc.
Watchdog Timer	1~255 sec./min. timer system reset or interrupt, setup by software
Expansion Interface	2 x PCI-Express x1, 1 x PICMG PCI, 1 x PCI
Storage	
IDE	1 x Ultra ATA100/66/33 interface
Serial ATA	4 x Serial ATA 300MB/s interface
Floppy	1 x FDD
CF	1 x CompactFlash Socket Type I/II
DOC/DOM	N/A
I/O Interface	
USB	8 x USB2.0 port, available interface of 4 x USB port and 2 x 9-pin header onboard
Serial Port	9 x RS-232, 1 x RS-232/422/485(COM1), available interfaces of 10 x 10-pin header onboard
Parallel Port	1 x LPT
IrDA	N/A
Audio	Onboard Realtek ALC888, available interfaces of Speaker-out, Line-in and Mic-in

Display	
Chipset	G31 chipset integrates GMA3100
Memory	384MB shared memory
Resolution	VGA mode up to 2048 x 1536@75Hz
Dual Display	Supports VGA+DVI-I independent dual display
Ethernet	
Chipset	Realtek RTL8111C
Speed	10/100/1000Mbps
Connector	2 x RJ45
Mechanical and Environmental	
Dimensions	243.84mm x 243.84mm
Operating Temperature	-15°C~60°C
Storage Temperature	N/A
Operating Humidity	5%-90%, non-condensing
Power	
Power Supply	Supports ATX power supply
Power Consumption	N/A
Operating System	
Windows OS	Windows NT 4.0/Windows 98SE/ Windows 2000/ Windows XP
Embedded OS	Linux/XP Embedded

Board Diagram



Available Accessories

Part Number	Name	Description	Qty.
1394-001351	I/O bracket/RoHS	163.1x49x0.25/punching/EC9-1813LD2NA	1
2330-000041	Jumper/RoHS	2.54mm pitch, blue	1
2360-002571	Dual USB ports with bracket/B4/RoHS	Two USB ports to one 10-pin (2x5), length: 210mm/RoHS	2
2360-008331	HDD flat cable/RoHS	DMA66/HDD/CABLE/40P/80-line/length: 450mm	1
2360-009031	FDD flat cable/RoHS	34P/Floppy disk/Data/Cable/200/350	1
2360-012431	Serial port cable/RoHS	DB9 male connector to dual IDC 2x5-pin 2.0mm pitch connectors with bracket, length: 300mm	5
2360-017961	SATAHDD cable/RoHS	SATA7-pin to SATA7-pin with elbow connector, length: 550mm/RoHS	1
—	Setup Guide/RoHS	AMI/BIOS Setup Guide (for CORE/8)	1
—	User's Manual/RoHS	EC9-1813VD2NA	1
—	Driver CD/Protective film/RoHS	EC9-1813VD2NA	1

Related Product

Item	Typical Recommendation
Embedded box PC	MEC-9402

Ordering Information

Part Number	Model Number	Description
0030-004040	EC9-1813VD2NA	Motherboard
0030-009060	EC9-1813VD2NA(B)	Motherboard