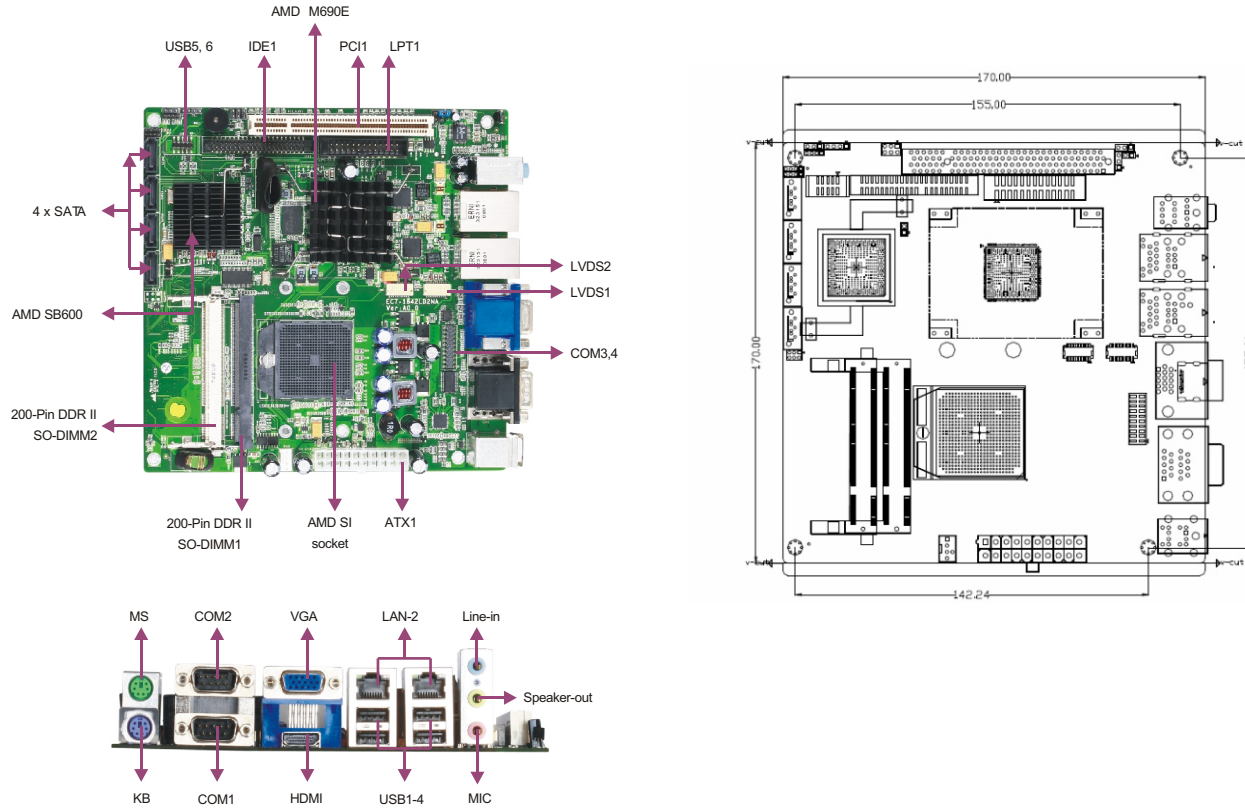
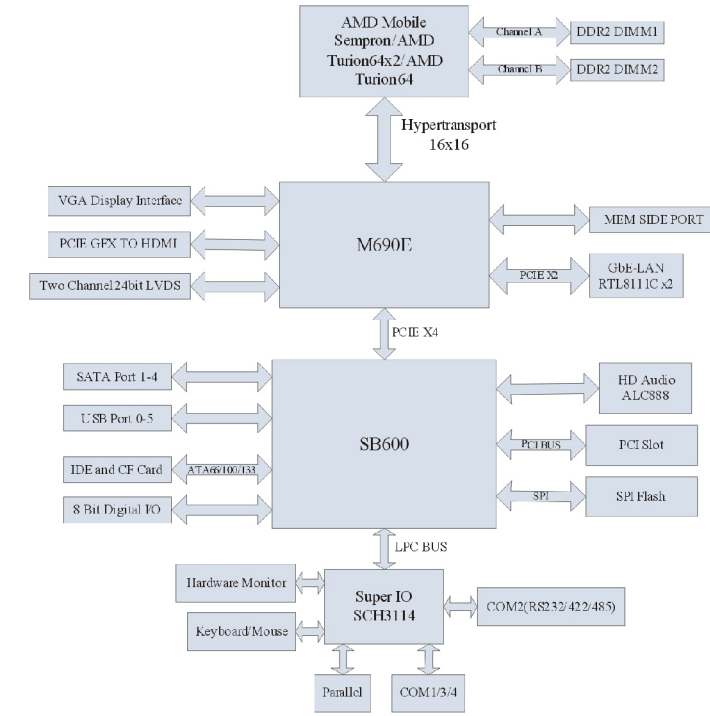


EC7-1842LD2NA

Mini-ITX SBC with HDMI/LVDS/VGA/SSD/Audio/2LAN/4COM/4SATA



Board Diagram



Features

- Supports AMD S1 form factor AMD Mobile Sempron™ and AMD Turion™ x2 dual-core CPU
- Two 200-pin DDRII 533/667/800MHz DIMM slots, up to 4GB
- Supports two GbE LAN
- Supports VGA, 24-bit dual-channel LVDS display and HDMI
- 8-channel digital input and digital output
- Four serial ports, one parallel port, four SATA ports, six USB ports

Available Accessories

Part Number	Name	Description	Qty.
—	Driver CD/Protective film/RoHS	EC7-1842LD2NA	1
2330-000041	Jumper/RoHS	2.54mm pitch, blue	2
2360-005051	Parallel port cable/RoHS	Parallel port cable, DB25 connector to 26 Pin, length: 300mm/RoHS	1
2360-017051	USB cable/RoHS	Dual USB ports with screws to 2x5 Pin connector, 2.0 pitch, length: 550mm	1
2360-018011	SATAHDD cable/RoHS	(7p-7p), length: 300mm/RoHS	4
—	Setup Guide/RoHS	AMI/BIOS Setup Guide (for CORE8)	1
—	User's Manual/RoHS	EC7-1842LD2NA	1

Ordering Information

Part Number	Model Number	Description
0030-012201	EC7-1842LD2NA/S	Motherboard/RoHS/S-video
0030-003360	EC7-1842LD2NA	Motherboard
0030-012200	EC7-1842LD2NA/S	Motherboard/S-video



Specifications

System	
Processor	Supports AMD S1 form factor AMD Mobile Sempron™ and AMD Turion™ x2 dual-core
Chipset	AMD M690E+SB600 chipset
Memory	Two 200-pin DDRII 533/667/800 SODIMM slots, up to 4GB
Hardware Monitor	Monitors the system status, voltage, temperature and fan speed
Watchdog Timer	Software programmable supports 1~255 sec./min. System reset/interrupt
Expansion Interface	One PCI slot
Storage	
IDE	1 x ATA-133/100 IDE port, supporting two IDE devices
Serial ATA	4 x SATAII port, supporting RAID 0/1/10
CF	1 x CompactFlash socket
I/O Interface	
USB	6 x USB2.0 port (four rear panel ports, one onboard USB header providing two extra ports)
Serial Port	4 x RS232 (COM1 supports RS-232/422/485)
Parallel Port	1 x LPT
Keyboard/Mouse	1 x PS/2
GPIO	4-channel digital input and 4-channel digital output, TTL level
Audio	HD Audio, ALC888, supporting Mic-in/Line-in/Speaker-out

Display	
Chipset	The chipset integrated X1250 graphics processing core
Memory	128M independent graphics memory
Display	Supports VGA, 24-bit LVDS and HDMI, and dual display of VGA+LVDS, VGA+HDMI
Ethernet	
Ethernet controller	2 x Realtek RTL8111C Ethernet controller
Speed	10/100/1000 Mbps
Connector	2 x RJ45 LAN connector
Mechanical and Environmental	
Dimensions	170mm x 170mm
Operating Temperature	0°C~60°C (optional -15°C~65°C)
Storage Temperature	-25°C~75°C
Operating Humidity	5%-95%, non-condensing
Power	
Power Supply	20-pin ATX power supply
Power Consumption	27.426W (Typical)
Operating System	
Windows OS	Windows 2000/ Windows XP
Embedded OS	Linux/XP Embedded