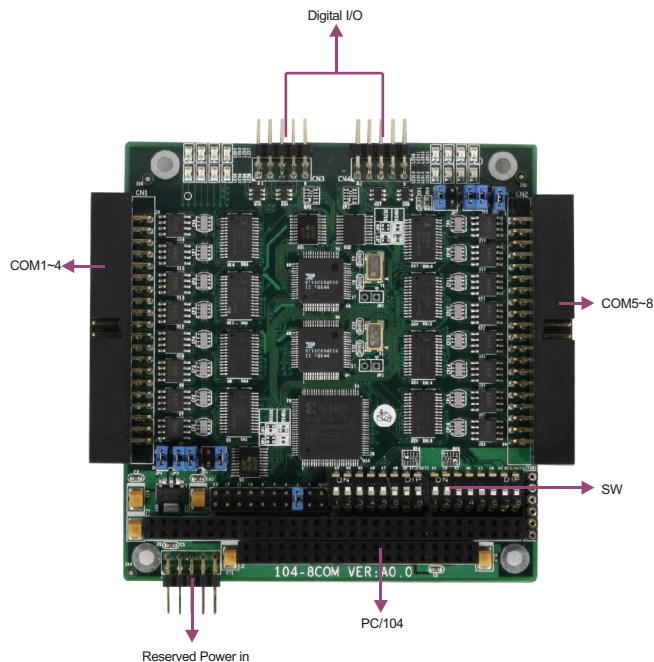


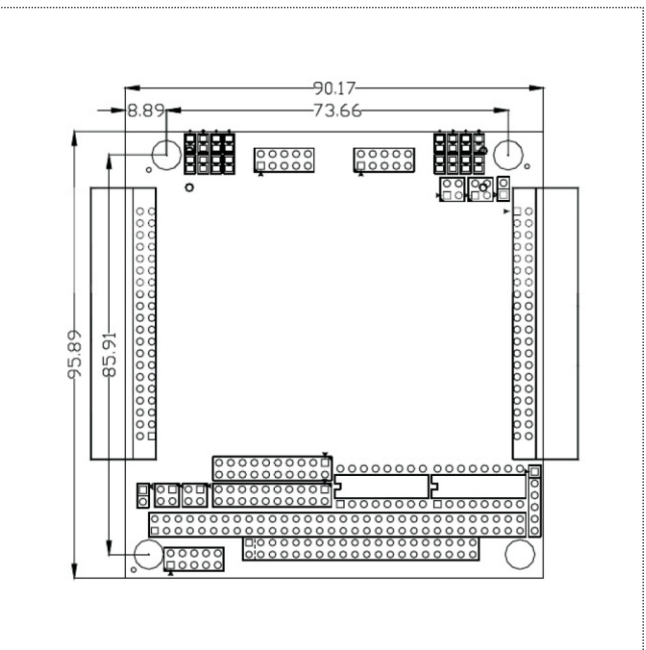
# 104-8COM



PC/104 8-serial port expansion module



## Dimensions



## Features

- PC/104 expansion bus
- 6 x RS-232, 2 x RS-232/422/485
- Transmitting Speed: 50Kbps~921.6Kbps



## Specifications

Expansion Bus	PC/104 expansion bus
Operating System	DOS, Linux, Win2000, WinXP, WinXPE, WinCE, VxWorks
Serial Port	6 x RS-232, 2 x RS-232/422/485
Digital I/O	8-channel digital I/O port (TTL)
Transmitting Speed	50Kbps~921.6Kbps
Power Supply	PC/104 bus power supply
Dimensions	90mm x 96 mm
Operating Temperature	-40°C~85°C
Operating Humidity	5%~95% RH, non-condensing

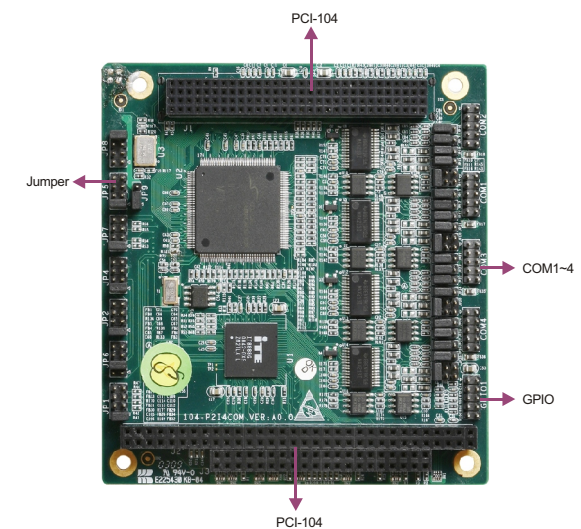
## Ordering Information

Part Number	Model Number	Description
0090-001270	104-8COM	PC/104 expansion bus, 8-serial-port expansion module.

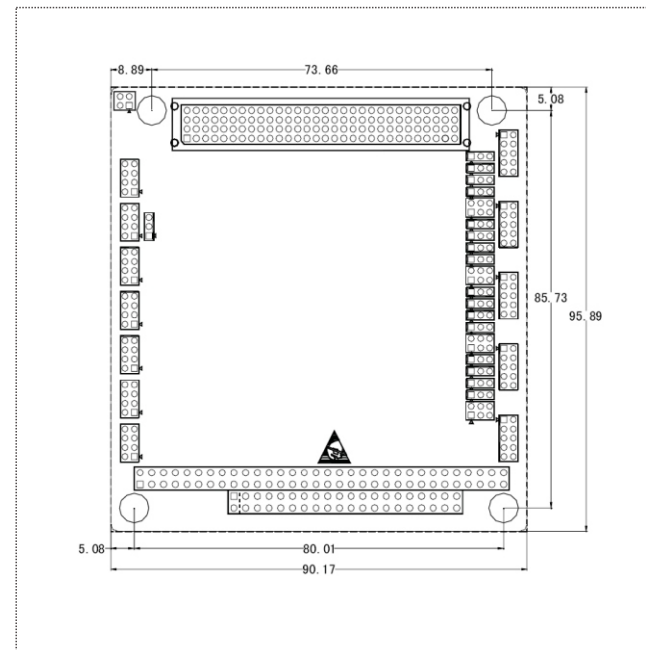
# 104-P2I4COM



PCI (PCI-104) to ISA (PC/104), 4 COM ports (RS-232/RS-485/RS-422 optional) and 8-bit digital I/O.



## Dimensions



## Features

- 4 x serial port
- 8-channel digital input/output
- PCI-104 Bus expansion PC/104 bus
- PCI-104 Bus power supply



## Specifications

Chipset	ITE IT8888 ISA bridge chip and OXFORD OxuPCI954 COM chip.
Bus Support	PCI-104
I/O Port	4 x COM port (RS232/RS485/RS422 optional), 8-channel digital I/O
Expansion Bus	PC/104
OS Compatibility	XP/Linux.
Power Supply	+3.3V, +5V
Programmable I/O	1 x 8-bit Digital I/O
Operating Temperature and Humidity	-40°C~85°C; 5%~95%, non-condensing
Storage Temperature and Humidity	-40°C~85°C; 5%~95%, non-condensing
EMC	Class A
MTBF	≥8000 hours.

## Ordering Information

Part Number	Model Number	Description
0090-003770	104-P2I4COM	PCI (PCI-104) to ISA (PC/104), 4 COM ports (RS-232/RS-485/RS-422 optional) and 8-bit digital I/O.

- 1 Full-Size/Half-Size Slot CPU Cards
- 2 SBC/Motherboard/Modules
- 3 Embedded Box PC
- 4 Network Application Computers
- 5 Industrial PC
- 6 HMI
- 7 EVOG Rugged Series
- 8 MCC Series
- 9 Chassis
- 10 Data Acquisition Boards & Modules
- 11 Accessories

- 1 Full-Size/Half-Size Slot CPU Cards
- 2 SBC/Motherboard/Modules
- 3 Embedded Box PC
- 4 Network Application Computers
- 5 Industrial PC
- 6 HMI
- 7 EVOG Rugged Series
- 8 MCC Series
- 9 Chassis
- 10 Data Acquisition Boards & Modules
- 11 Accessories